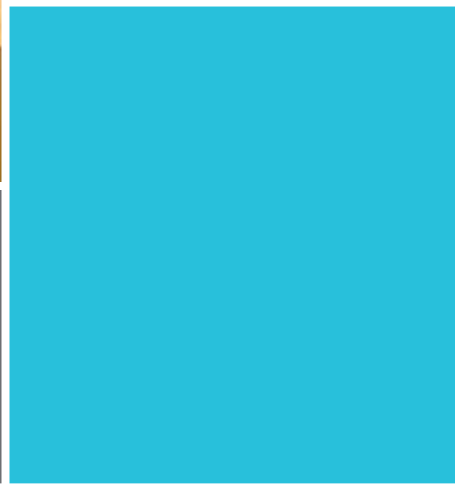
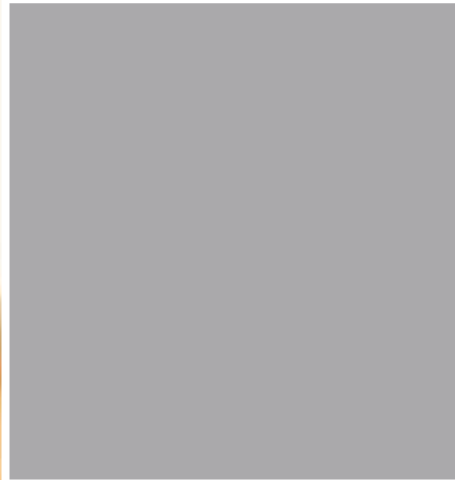


AssuranceSelect 7

A fixed-indexed annuity from Great American Life Insurance Company®




GREATAMERICAN
LIFE INSURANCE CO.
a MassMutual company

Uncomplicate Retirement®



Photo submitted by Adrienne from Pennsylvania, valued annuity customer since 2002.

Help Secure Your Retirement With The AssuranceSelect 7

A fixed-indexed annuity that offers:



Growth opportunity

You can allocate your money to interest strategies that may help you accumulate more assets for retirement.



Protection from loss

Regardless of market conditions, you won't lose the money you contribute to your annuity unless you take a withdrawal or surrender your contract during its early withdrawal charge period.



Guaranteed retirement income

When you're ready to turn the money you've accumulated in your annuity into retirement income, you can select from a variety of payout options, including an income stream that will last for the rest of your life.

Annuity Basics

Simply put, an annuity is a contract between you and an insurance company. It is a long-term financial vehicle that's designed to protect and grow your money, and then provide a stream of income during your retirement. In fact, other than pensions, **annuities are the only products that provide guaranteed lifetime income.**

Great American Life[®] is committed to offering annuities that are simpler and easier to understand – helping to achieve your goals with no surprises.





Pick Your Path To Growth

Fixed-indexed annuities offer multiple interest strategies to help you build your savings.

Indexed strategies offer you the unique opportunity to earn interest based, in part, on market performance without the risk of market loss. A **declared rate strategy** allows you to grow your money at a fixed interest rate that is set at the beginning of each one-year term.

You have the flexibility to choose the strategies that are right for you. We know your needs may change over time, so you can revisit your strategy selections at the end of each one-year term.

How Do Indexed Strategies Work?

It's simple. Funds in an indexed strategy earn interest based, in part, on the positive performance of an external index, such as the S&P 500®. Interest is credited on the last day of each one-year term and is **guaranteed to never be less than 0%**.

The AssuranceSelectSM 7 offers point-to-point and monthly averaging indexed strategies.

The **point-to-point** strategies compare the closing value of an index at the end of a one-year term to the closing value on the first day of the term. If the result is positive, interest is credited. If the result is negative, the credited interest rate is 0%. The amount of interest credited at the end of the term is limited by either a cap or a participation rate.

- A **cap** is the maximum interest rate that will be credited for a one-year term.
- A **participation rate** is the percentage of a positive index change that will be credited for a one-year term.

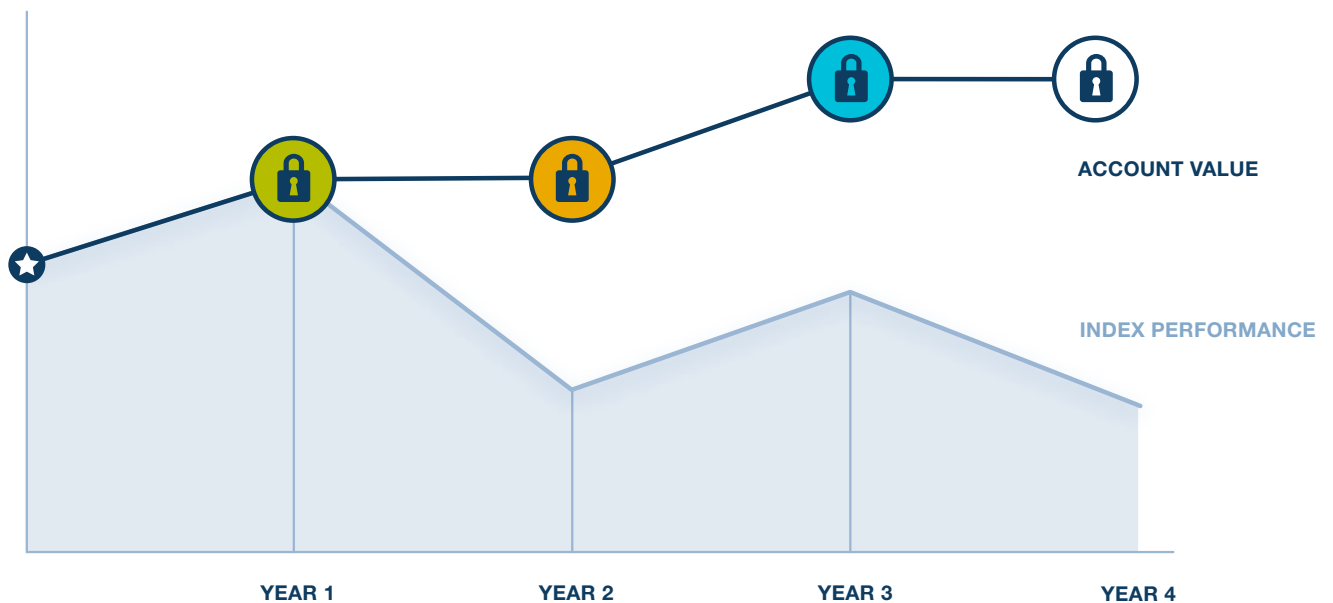
The **monthly averaging** indexed strategy compares the average of the closing index values at the end of each month-long period during the term to the closing index value on the first day of the term. If the result is positive, interest is credited, subject to the cap. If the result is negative, the credited interest rate is 0%.

Any interest credited to your account value is locked in at the end of each one-year term and cannot be lost due to future market performance.

Protect Your Earnings With Annual Reset

A fixed-indexed annuity not only protects your principal, it also protects your earnings with annual reset. Any interest credited to your account value is locked in at the end of each one-year term and cannot be lost due to future market performance. Additionally, if index performance is negative for a term, your annuity can earn interest the next term, even if the index has not made up its previous loss. This means your annuity earns interest for any term in which the index change is positive.

How annual reset works



Index performance is positive.

Your annuity earns interest that is locked in and protected from future index declines.

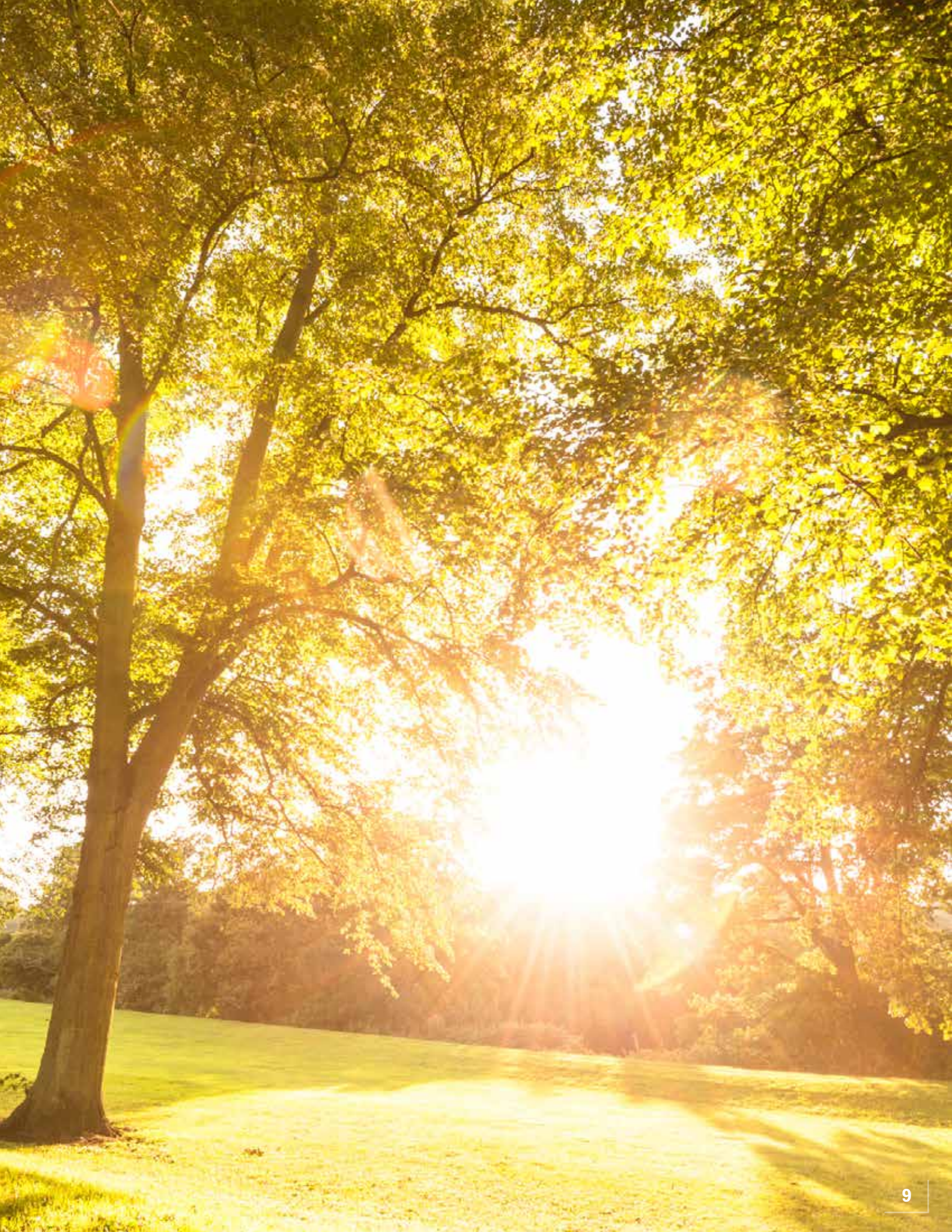
Index performance is negative.

Your principal and earnings remain protected, leaving your account value unchanged.

The index begins to recover.

Your annuity earns interest, even though the index has not made up its previous loss.

The example above is for illustrative purposes only. It does not reflect actual index performance.



Additional Benefits



Tax treatment that allows faster growth

You don't pay taxes on the interest your contract earns until you start receiving payments or take a withdrawal, so your money can grow at a faster rate than it would in a taxable product.



Guaranteed retirement income

With life expectancies on the rise, you may worry about outliving your savings. The AssuranceSelectSM 7 provides the opportunity to turn the money you've accumulated in your annuity into a steady stream of retirement income. Depending on which payout option you choose, income benefit payments are made for a specific number of years or for life.

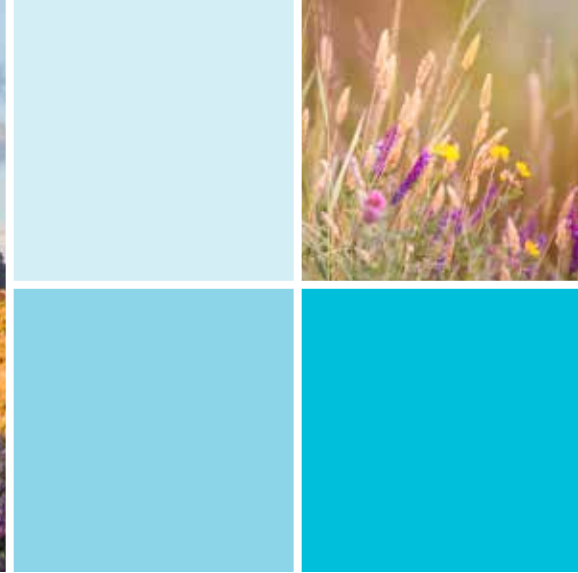


Protection for your loved ones

No one likes to think about it, but part of achieving peace of mind is knowing what would happen to your money if you pass away unexpectedly. With the AssuranceSelect 7, any death benefit is paid directly to your beneficiaries, which allows them to receive your financial legacy without the cost and delays of probate.

This information is not intended or written to be used as legal or tax advice. It was written solely to provide general information and support the sale of annuity products. You should seek advice on legal or tax questions based on your particular circumstances from an attorney or tax advisor.

For qualified contracts, the full amount withdrawn is generally subject to income tax. For other contracts, only the gains are subject to income tax. If you are under age 59½, the taxable amount is also generally subject to a 10% federal penalty tax.



Consider Your Liquidity Needs

The AssuranceSelect 7 is intended to be a long-term product. However, you will have access to a portion of your money each year with penalty-free withdrawals.

During the first contract year, you may withdraw up to 10% of your purchase payments. After the first contract year, 10% of the account value on the most recent contract anniversary may be withdrawn.

It's important to note withdrawals in excess of this amount may be subject to **early withdrawal charges**. Early withdrawal charges end after seven years.

Our simple promise to you:
superior service and annuities
that are easier to understand.



Cincinnati, Ohio: Home of Great American Life Insurance Company

Great American Life. It Pays To Keep Things Simple.®

Why choose Great American Life?

As a leading provider of annuities, Great American Life Insurance Company is committed to helping people plan for a secure retirement. We offer a level of financial strength that our customers can count on. We are a wholly owned subsidiary of MassMutual, one of the largest life insurance companies in the U.S., founded in 1851.

Our simple promise

When it comes to planning for your future, we believe it pays to keep things simple. From the products we offer to the service we provide, we make things as easy as possible. Whenever you have a question, we're only a phone call away. It's part of our simple promise to you: superior service and annuities that are easier to understand.

AssuranceSelect 7 Features

Issue ages	<p>Qualified: 0–85 Non-qualified: 0–85 Inherited IRA: 0–75 Inherited non-qualified: 0–75</p>																		
Purchase payments	<p>You can purchase this annuity with an initial purchase payment of \$10,000 or more. You can add to your annuity during the first 10 contract years with additional purchase payments of at least \$2,000.</p>																		
Fees	<p>There are no upfront charges. All your money goes to work for you.</p>																		
Interest strategies	<ul style="list-style-type: none"> ➤ Declared rate ➤ S&P 500® 1-year point-to-point with cap ➤ S&P 500® 1-year monthly averaging with cap ➤ S&P 500 Risk Control 1-year point-to-point with participation rate ➤ SPDR® Gold Shares 1-year point-to-point with cap <p>Available strategies may vary by state and by distribution.</p>																		
Term	<p>Each strategy offers a one-year term.</p>																		
Penalty-free withdrawals	<p>During the first contract year, you may withdraw up to 10% of your purchase payments. After the first contract year, 10% of the account value on the most recent contract anniversary may be withdrawn. Amounts withdrawn in excess of the penalty-free withdrawal allowance may be subject to early withdrawal charges.</p>																		
Early withdrawal charges	<p>During the first seven contract years, an early withdrawal charge starting at 9% is applied to surrenders and withdrawals that exceed the 10% penalty-free amount. All charges end after seven years.</p> <table border="1" data-bbox="472 1608 1458 1688"> <thead> <tr> <th>Contract year</th> <th>1</th> <th>2</th> <th>3</th> <th>4</th> <th>5</th> <th>6</th> <th>7</th> <th>8+</th> </tr> </thead> <tbody> <tr> <td>Early withdrawal charge</td> <td>9%</td> <td>8%</td> <td>7%</td> <td>6%</td> <td>5%</td> <td>4%</td> <td>3%</td> <td>0%</td> </tr> </tbody> </table>	Contract year	1	2	3	4	5	6	7	8+	Early withdrawal charge	9%	8%	7%	6%	5%	4%	3%	0%
Contract year	1	2	3	4	5	6	7	8+											
Early withdrawal charge	9%	8%	7%	6%	5%	4%	3%	0%											

<p>Guaranteed minimum surrender value</p>	<p>The amount payable to you if you surrender your contract will never be less than the Guaranteed Minimum Surrender Value (GMSV). The GMSV is based on 100% of your purchase payments, plus interest credited daily at a guaranteed minimum rate, minus the account value multiplied by the applicable early withdrawal charge rate. Ask your financial professional for the rate that will apply to your contract.</p> <p>This means, in certain situations when your contract earns no interest due to flat or declining index performance, the amount payable upon surrender may still be greater than the amount of money you contributed to your annuity. It's important to remember the GMSV is reduced by prior withdrawals.</p> <p>The GMSV will not be less than the minimum values required by the state in which your annuity is issued.</p>
<p>Income payout options</p>	<p>Fixed period: You receive income benefit payments for a fixed period of time that you select.</p> <p>Life or life with a minimum fixed period: You receive income benefit payments for life. If you select a minimum fixed period of time and pass away before the end of the period, the remaining income benefit payments are paid to the person you designate.</p> <p>Joint and one-half survivor: Income benefit payments are guaranteed for your life and the life of a designated joint annuitant. If you are survived by the joint annuitant, he or she will receive 50% of the income benefit payment for life.</p>
<p>Included waiver riders</p>	<p>Extended care waiver rider: After the first contract year, if you are confined to a nursing home or long-term care facility for at least 90 consecutive days, you have the option to withdraw up to 100% of the account value without incurring an early withdrawal charge.</p> <p>Terminal illness waiver rider: After the first contract year, if you are diagnosed by a physician as having a terminal illness, you have the option to withdraw up to 100% of the account value without incurring an early withdrawal charge. A terminal illness is defined as having a prognosis of survival of 12 months or less, or a longer period as required by state law.</p> <p>Extended care and terminal illness waiver riders are not available in Massachusetts. In California, the Extended Care Waiver Rider has been replaced with the Waiver of Early Withdrawal Charges for Facility Care or Home Care or Community-Based Services Rider, which provides for a waiver of early withdrawal charges under an expanded variety of circumstances.</p>



The S&P 500 Risk Control 10% Index refers to the S&P 500 Average Daily Risk Control 10% USD Price Return Index. For more information, visit US.SPIndices.com and search keyword SPXAV10P. SPDR Gold Shares refer to units of interest in an exchange traded fund that reflect the market value of gold bullion.

The S&P 500 Index and S&P 500 Average Daily Risk Control 10% Price Return index are products of S&P Dow Jones Indices LLC (“SPDJI”), and have been licensed for use by Great American Life. Standard & Poor’s®, S&P® and S&P 500 Average Daily Risk Control 10%™, SPDR® and STANDARD & POOR’S DEPOSITORY RECEIPTS® are trademarks of Standard & Poor’s Financial Services LLC (“S&P”); Dow Jones® is a registered trademark of Dow Jones Trademark Holdings LLC (“Dow Jones”); and these trademarks have been licensed for use by SPDJI and sublicensed for certain purposes by Great American Life. Great American Life’s AssuranceSelectSM 7 is not sponsored, endorsed, sold or promoted by SPDJI, Dow Jones, S&P, their respective affiliates, and none of such parties make any representation regarding the advisability of investing in such product(s) nor do they have any liability for any errors, omissions, or interruptions of the S&P 500 Index or the S&P 500 Average Daily Risk Control 10% Price Return Index.

Great American Life Insurance Company is not an investment adviser and the information provided in this document is not investment advice. You should consult your investment professional for advice based on your personal circumstances and financial situation.

Please note, this is a general description of the product. Please read your contract, including the endorsements and riders, for definitions and complete terms and conditions, as this is a summary of the annuity’s features. For use with contract forms P1080010NW, P1080015ID and P1080010OR, endorsement forms E6043517NW, E6043617OR, E6043717OR, E6043917OR and E6051217OR and rider forms R6032310NW and R6032410NW (not available in Massachusetts) and R6032310OR and R6032410OR. Contract, endorsement and rider form numbers may vary by state. Products and features may vary by state, and may not be available in all states. See specific product disclosure document for details.

All guarantees based on the claims-paying ability of Great American Life.

Products issued by Great American Life Insurance Company® (Cincinnati, Ohio), a wholly owned subsidiary of MassMutual. © 2021 Great American Life Insurance Company. All rights reserved.

Great American® appearing with the Great American Logo is a registered trademark of Great American Insurance Company and is used under license.

Not FDIC or NCUSIF Insured	No Bank or Credit Union Guarantee	May Lose Value	Not Insured by any Federal Government Agency	Not a Deposit
----------------------------	-----------------------------------	----------------	--	---------------